

ENSURE THAT SAW IS UNPLUGGED FROM THE POWER SUPPLY !!!!

Supplemental Manual How to Change Saw Blade

This document is only supplemental manual with some tricks. If you are unsure how to proceed, please consult with the original saw manual.

FIRST: **ENSURE THAT SAW IS UNPLUGGED FROM THE POWER SUPPLY !!!!**

Please mind that this saw blade change can be performed by experienced person.

Please ensure that you use a correct blade for the saw with correct blade diameter, hole diameter, allowed rpm and type.

This manual for changing blade is for Evolution FURY3-B mitre saw.



ENSURE THAT SAW IS UNPLUGGED FROM THE POWER SUPPLY !!!!

Remove two bolts as depicted on the picture below.



Please ensure that you don't lose rubber for securing turning plate. The rubber position is depicted on the below picture.



ENSURE THAT SAW IS UNPLUGGED FROM THE POWER SUPPLY !!!!

Remove bolt which holds the safe cover.



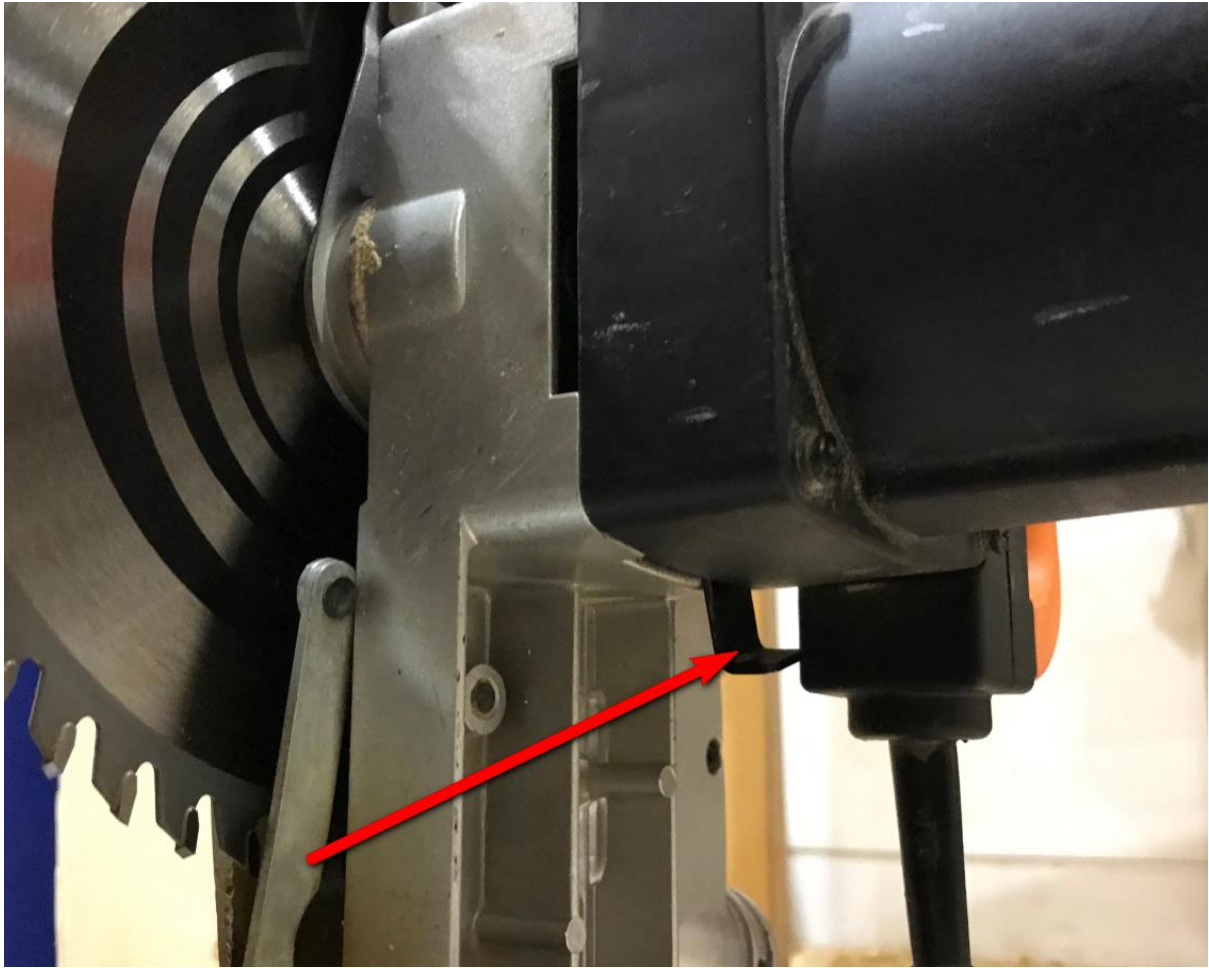
ENSURE THAT SAW IS UNPLUGGED FROM THE POWER SUPPLY !!!!

Lift saw up. Lift safe cover when needed to expose blade.



ENSURE THAT SAW IS UNPLUGGED FROM THE POWER SUPPLY !!!!

On the bottom of the engine is the axle. Push inside and hold it with one hand.



ENSURE THAT SAW IS UNPLUGGED FROM THE POWER SUPPLY !!!!

At the same time unscrew bolt holding saw the blade.

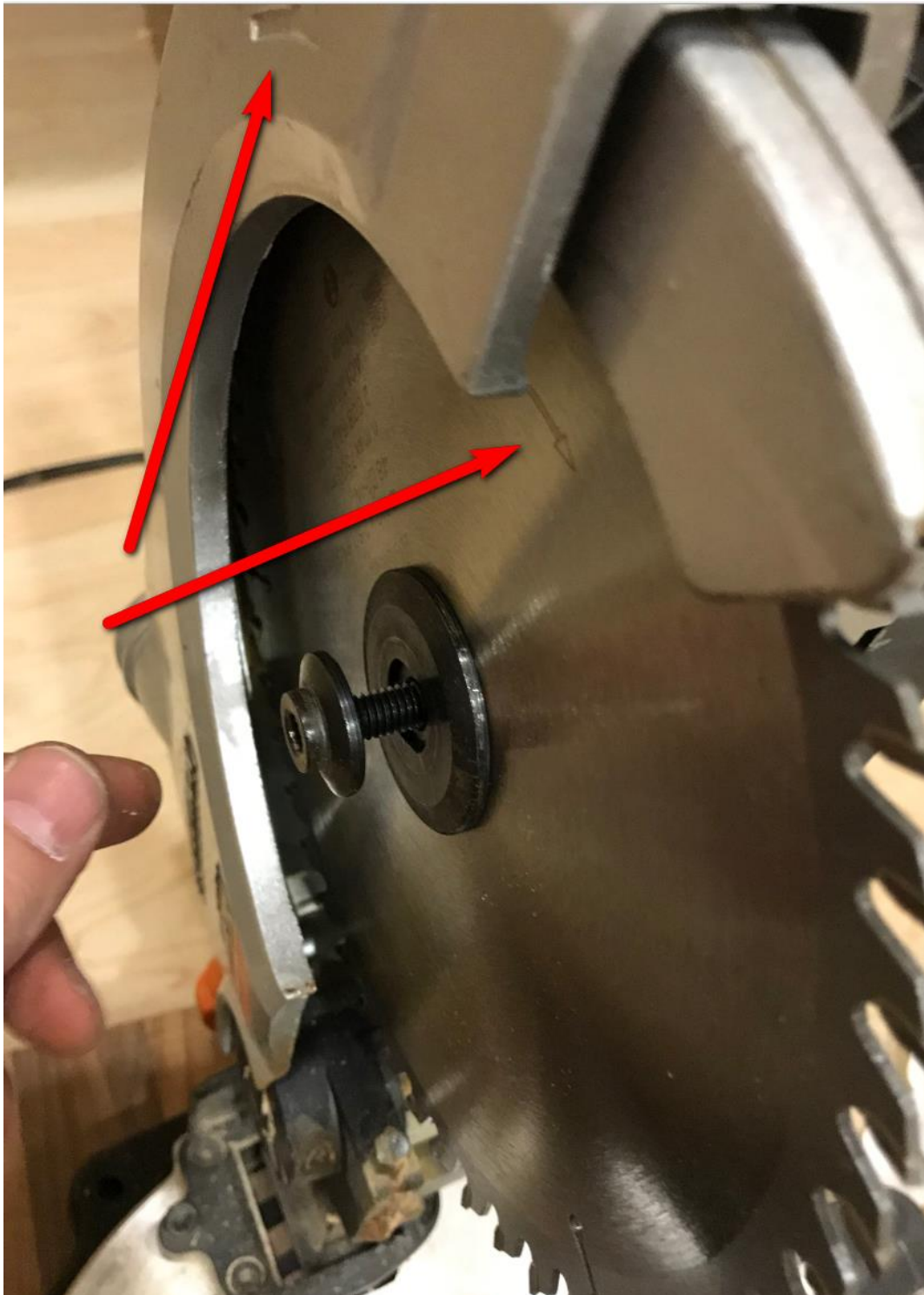


The holding bolt should go out easily. If you can't unscrew easily, please use WD40. Wait a while and try again. **Unscrewing is clockwise!**

ENSURE THAT SAW IS UNPLUGGED FROM THE POWER SUPPLY !!!!

Take out the old blade and put in the place the new one.

Follow the TURNING ARROW !!!! Arrows on the blade and saw have to have the same orientation!!!



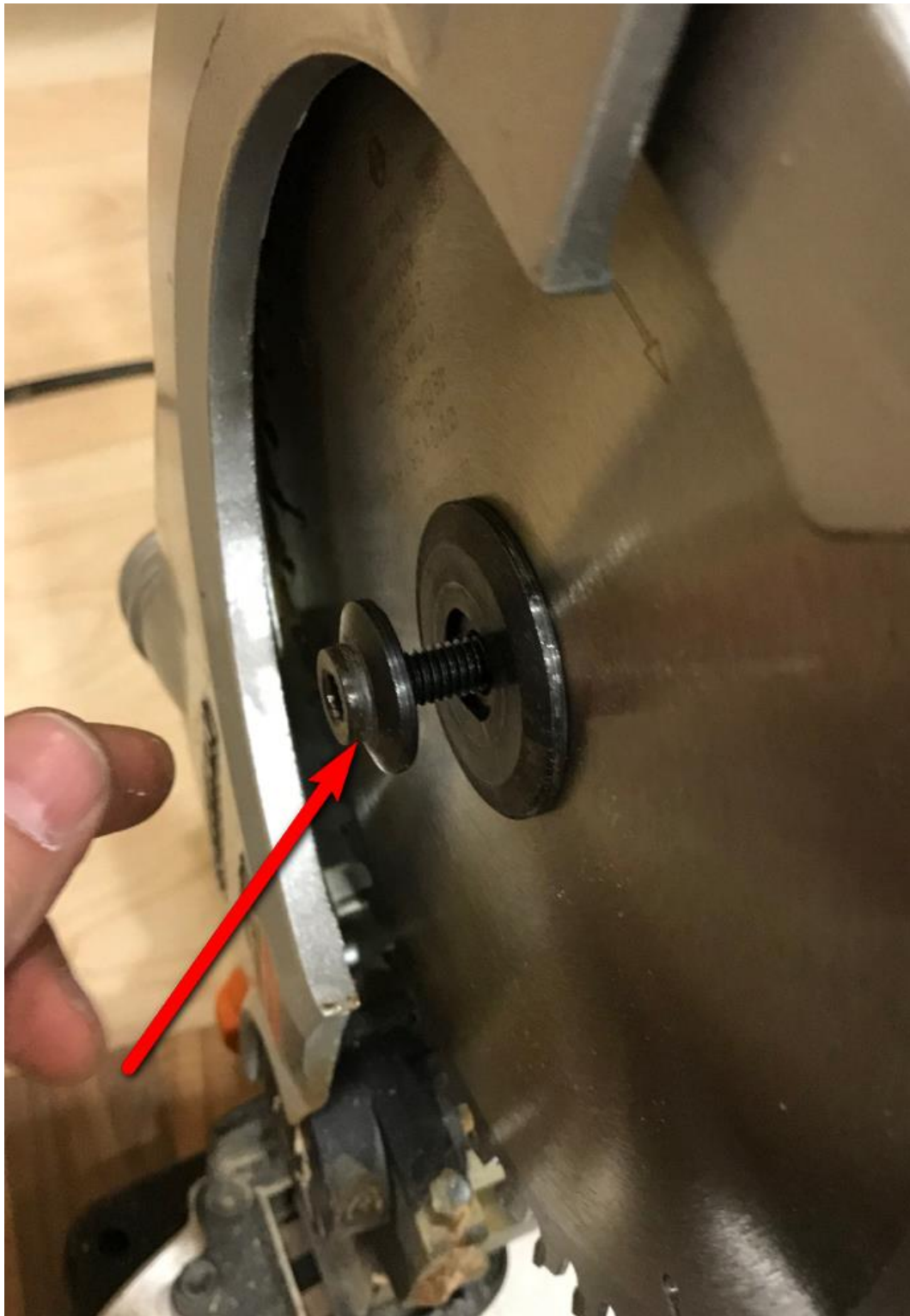
ENSURE THAT SAW IS UNPLUGGED FROM THE POWER SUPPLY !!!!

If the blade has a wider hole, you need to use washer.



ENSURE THAT SAW IS UNPLUGGED FROM THE POWER SUPPLY !!!!

Screw back the bolt which holds the blade. The bolt has to be fastened firmly! Please use reasonable strong force to screw the bolt. **Screwing is anti-clockwise.**



ENSURE THAT SAW IS UNPLUGGED FROM THE POWER SUPPLY !!!!

Test by hand manually that the blade turns freely.

Also test turning blade by hand when you put saw down into working position and check that blade moves freely in horizontal position down and all angles.

If the blade doesn't turn freely, please check blade is the correct side and consult with the saw manual.

Screw back bolt holding the safety cover



ENSURE THAT SAW IS UNPLUGGED FROM THE POWER SUPPLY !!!!

Ensure that the rubber is still on the holder holding on the position depicted on the below picture.



Screw back holder



ENSURE THAT SAW IS UNPLUGGED FROM THE POWER SUPPLY !!!!

Ensure that holder is correctly positioned in the right angle.

