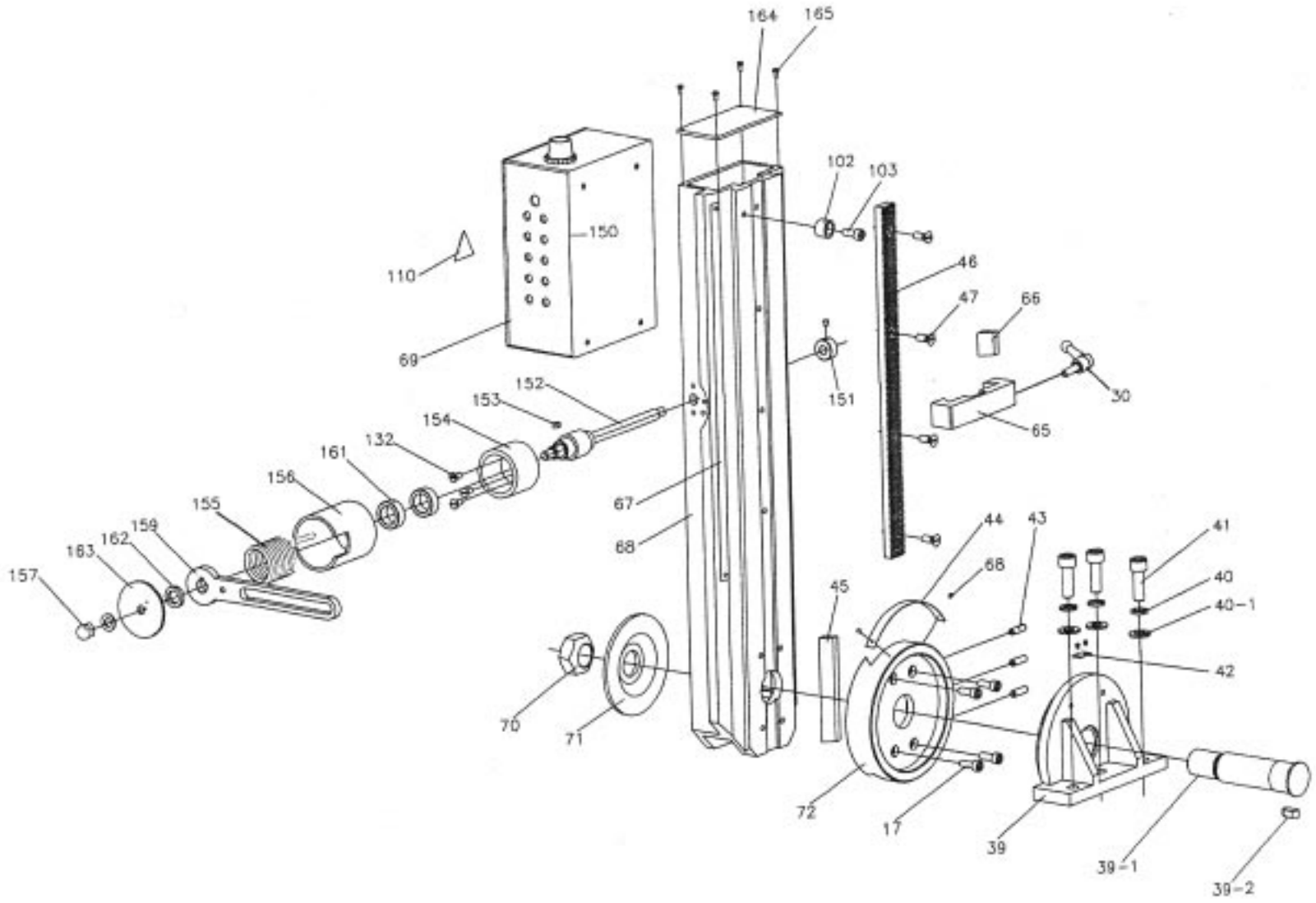
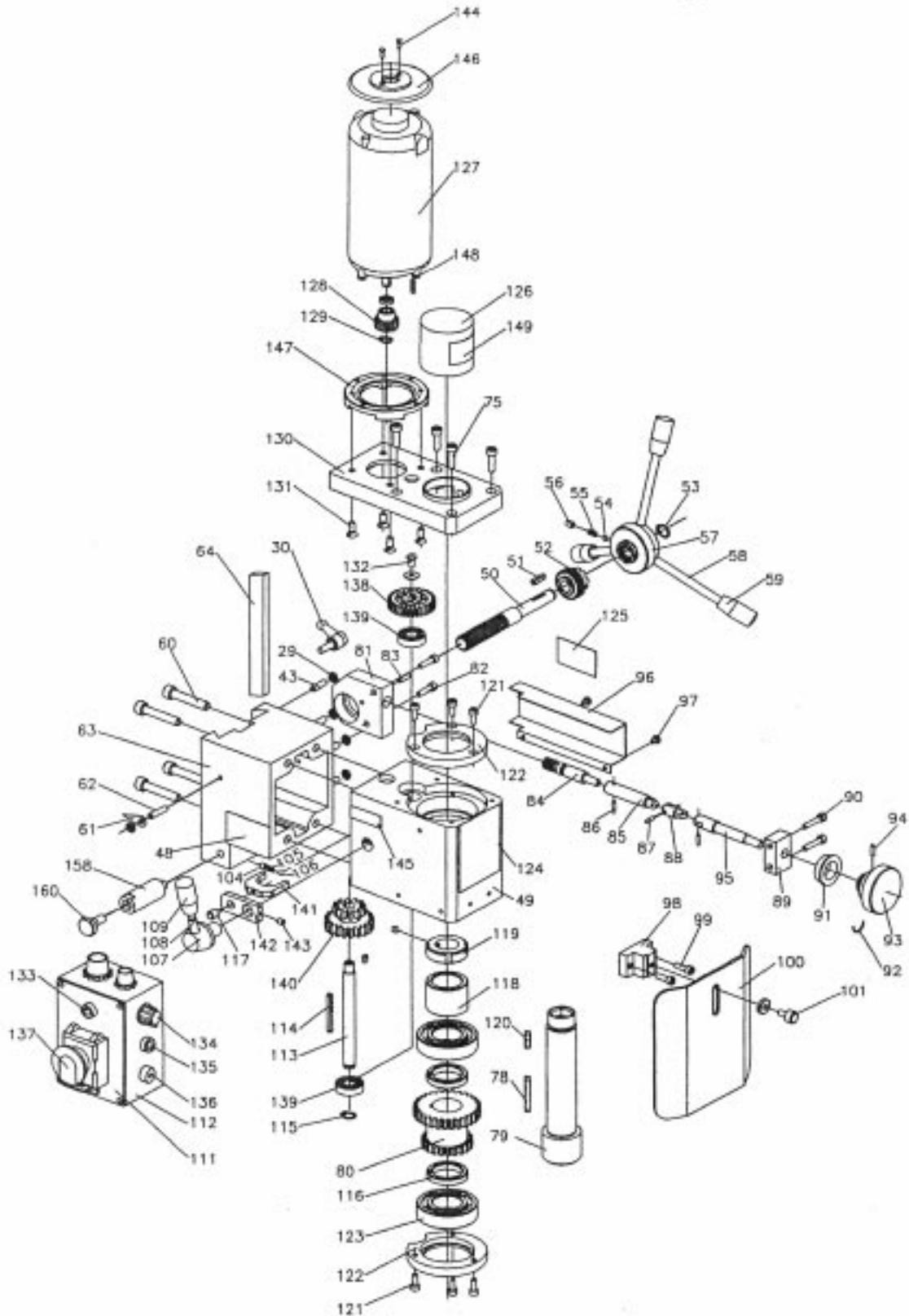


Longitudinal(Y)Axis
Cross (X)Axis



Vertical (Z) Axis

Spindle and Gear box



□ Parts List

Item No	Part Name	Q'ty	Item No	Part Name	Q'ty
1	Base	1	38	Cap screw M6 × 25	2
2	X-axis feeding screw	1	39	Fuselage seat	1
2-1	Key 4 × 16	2	39-1	Shaft	1
4	Dial	2	39-2	Key 8 × 12	1
5	Hand wheel	2	40	Spring washer 10	3
6	Nut M8	2	40-1	Washer 10	3
7	Knob	2	41	Cap screw M10 × 30	3
8	Screw M8 × 55	2	42	Guide finger	2
9	Cap screw M6 × 8	8	43	Set screw M6 × 22	7
10	Holding plate (1)	1	44	Ruler	1
11	Dust guard cover	1	45	Wedge	1
12	Holding plate(2)	2	46	Gear rack	1
13	Ball bearing 8200	2	47	Cap screw M6 × 12	4
14	Washer	2	48	Name plate	1
15	Nut M8	4	49	Spindle box	1
16	Y-axis ruler	1	50	Pinion	1
17	Cap screw M6 × 16	4	51	Key 4 × 25	1
18	Y-axis bearing seat	1	52	Bevel gear	1
19	Working table	1	53	R etaining ring 12	1
20	Y-axis feeding screw	1	54	Ball Φ 5.0	1
21	End cover	1	55	Spring 0.8 × 0.8 × 10	1
22	Screw M6 × 10	2	56	Screw M6 × 8	1
23	Y-axis screw nut	1	57	Handle stock	1
24	Holding plate(3)	1	58	Operating lever	3
25	Dust guard cover	1	59	Lever cap	3
26	Screw seat	1	60	Cap screw M8 × 25	4
27	Cap screw M6 × 16	2	61	Guide finger	1
28	Set screw M6 × 22	6	62	Cap screw M6 × 25	1
29	Nut M6	13	63	Spindle box seat	1
30	Handle	3	64	Wedge	1
31	Screw M6 × 10	2	65	Limit block	1
32	Guide finger	1	66	Wedge	1
33	Screw M6 × 8	1	67	Ruler	1
34	X-axis wedge	1	68	Fuselage	1
35	Saddle	1	69	Electric box	1
36	Y-axis wedge	1	70	Lock nut M24	1
37	X-axis screw nut	1	71	Big washer	1

□ Parts List

Item No	Part Name	Q'ty	Item No	Part Name	Q'ty
72	Connecting strut	1	122	Bearing cover	2
78	Key 5 × 5 × 40	1	123	Ball bearing 80206	2
79	Spindle	1	124	Name plate	1
80	Transmission gear	1	125	Fine feeding laebel	1
81	Support block	1	126	Protecting cover	1
82	Screw M5 × 20	2	127	Motor	1
83	Pin4 × 15	1	128	Motor gear	1
84	Worm	1	129	Intering ring 9.0	1
85	Sleeve	1	130	Motor seat	1
86	Pon 3 × 12	1	131	Flat screw M6 × 12	4
87	Pin 3 × 12	2	132	Round screw M5 × 8	4
88	Adjustable union	1	133	Yellow lamp	1
89	Bracket	1	134	Speed control knob	1
90	Screw M5 × 25	1	135	Green lamp	1
91	Dial	1	136	Fuse box	1
92	Spring stee11.0	3	137	Emergency stop switch	1
93	Small hand wheel	1	138	Gear	1
94	Screw M5 × 16	1	139	Ball bearing 80101	2
95	Small shaft	1	140	Transmission gear	1
96	Cover	1	141	Bar	1
97	Screw M4 × 6	2	142	Linking board	1
98	Support of dust cover	1	143	Set screw M5 × 8	1
99	Screw M5 × 16	2	144	Self-tapping Screw ST2.9 × 8	2
100	Dust guard	1	145	H/L label	1
101	Clamp bolt M6 × 12	1	146	Motor cover	1
102	Upper end washer	1	147	Motor connecting flange	1
103	Upper end screw M6 × 16	1	148	Screw M6 × 10	4
104	Set screw M6 × 6	1	149	Warning lable	1
105	Spring 0.8 × 4.8 × 10	1	150	PC board	1
106	BallΦ 5.0	1	151	Lock sleeve	1
107	Handle seat	1	152	Rotor shaft	1
108	Double head bolt M8 × 70	1	153	Key 4 × 6	1
109	Knob	1	154	Spring support	1
110	Warning label	1	155	Torsion spring	1
111	Controller	1	156	Cover	1
112	Label on controller	1	157	Nut	1
113	Shaft(1)	1	158	Prop	1
114	Double roud hea d key4 × 4 × 45	1	159	Supporting shank	1
115	Internal ringΦ12	1	160	Screw	1
116	Spacing ring	2	161	Washer	2
117	Small shaft	1	162	Internal ring 12	1
118	Spacing ring	1	163	Cover	1
119	Spindle nut	1	164	Top Cover	1
120	Double round head key5 × 5 × 30	1	165	Screw M3 × 6	4
121	Cap srew M5 × 8	6			